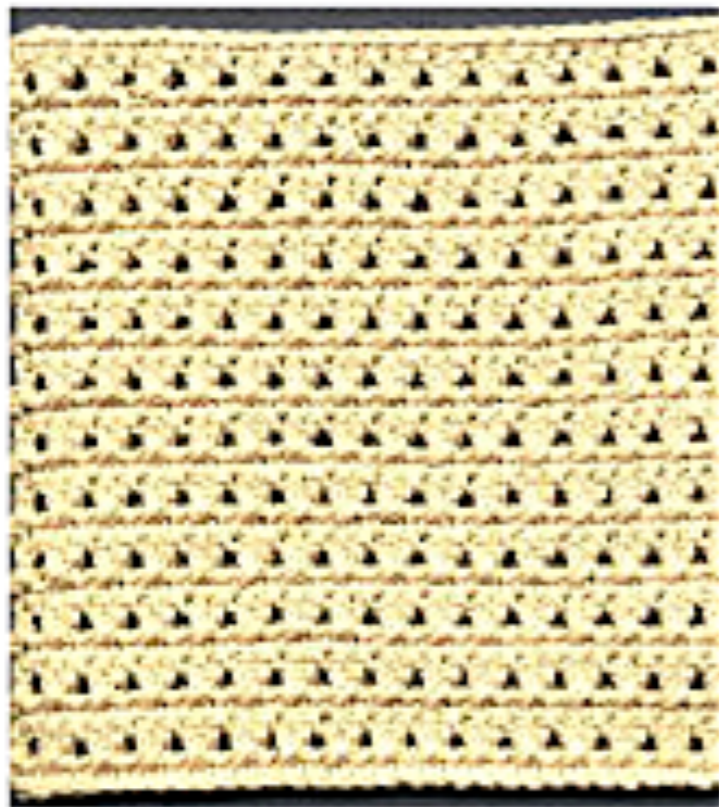


X-Stitch Kitchen Set

Potholder Front



Potholder Back



Dishcloth

X-STITCH KITCHEN SET

Designed by Priscilla Hewitt

Copyright © 2000 Priscilla's Crochet

This set includes a potholder, hot pad, scrubbie, dishcloth and hanging towel. The potholder, hot pad and scrubbie are double-thick, but worked in one piece. Fun!



Materials:

- 6-8 ounces worsted weight cotton yarn
- 2 ounces Needleloft 100% nylon yarn for scrubbie
- Crochet hook size G
- Button for towel

Gauge for potholder: Rows 1-5= 5 1/2" long x 1 3/4" high

***Pattern Note:** When a row is divided into a first and second half, the first half is worked in the back loop only of the sc's on the previous row. The second half is worked in the unworked loops of the same row.

.....

Potholder (Finished size: about 6" x 6")

Ch 21.

Row 1: Sc in the 2nd ch from hook and in each ch across; ch 2, turn. (20 sc)

Note: The turning ch 2 does not count as a dc.

First half of Row 2: Skip first sc, dc in the back loop only of the next sc, dc in the back loop only of the skipped sc, (skip next unworked sc, dc in the back loop only of the next sc, dc in the back loop only of the skipped sc) 9 times; turn (10 cross sts)

Second half of Row 2: Dc in each of the 20 unworked loops of the sc on row 1; ch 1, turn. (20 dc) (This half of the row is worked behind the first half.)

Row 3: Matching the stitches of the first and second halves of row 2, sc through both thicknesses across; ch 2, turn. (20 sc)

First half of Row 4: Dc in the back loop only of each of the next 20 sc; turn (20 dc)

Second half of Row 4: (Skip unworked loop of the next sc, dc in the unworked loop of the next sc, dc in the unworked loop of the skipped sc) 10 times; ch 1, turn. (10 cross sts)

Row 5: Matching the stitches of the first and second halves of row 2, sc through both thicknesses across; ch 2, turn. (20 sc)

Rows 6-17: (Repeat rows 2-5) 3 times; do not turn at the end of row 17.

Edging: Sc evenly around the potholder, working (ch 15, join with a sl st in the first ch) for the hanging loop in any corner.

Next round: Sl st in every sc and every ch around; join with a sl st in the first sl st. Fasten off. Weave in ends.

Hot pad (not pictured) (Finished size: about 7" x 7")

Ch 25.

Row 1: Sc in the 2nd ch from hook and in each ch across; ch 2, turn. (24 sc)

***Pattern Note:** The turning ch 2 does not count as a dc.

First half of Row 2: Skip first sc, dc in the back loop only of the next sc, dc in the back loop only of the skipped sc, (skip next unworked sc, dc in the back loop only of the next sc, dc in the back loop only of the skipped sc) 11 times; turn (12 cross sts)

Second half of Row 2: Dc in each of the 24 unworked loops of the sc on row 1; ch 1, turn. (24 dc) (This half of the row is worked behind the first half.) **Row 3:** Matching the stitches of the first and second halves of row 2, sc through both thicknesses across; ch 2, turn. (24 sc)

First half of Row 4: Dc in the back loop only of each of the next 24 sc; turn (24 dc)

Second half of Row 4: (Skip unworked loop of the next sc,

dc in the unworked loop of the next sc, dc in the unworked loop of the skipped sc) 12 times; ch 1, turn. (12 cross sts)

Row 5: Matching the stitches of the first and second halves of row 2, sc through both thicknesses across; ch 2, turn. (24 sc)

Rows 6-21: (Repeat rows 2-5) 4 times; do not turn at the end of row 21. Edging: Sc evenly around the hot pad.

Next round: Sl st in every sc around; join with a sl st in the first sl st. Fasten off. Weave in ends.

Scrubbie (not pictured) (Finished size: about 3" x 3")

Ch 11.

Row 1: Sc in the 2nd ch from hook and in each ch across; ch 2, turn. (10 sc)

Note: The turning ch 2 does not count as a dc.

First half of Row 2: Skip first sc, dc in the back loop only of the next sc, dc in the back loop only of the skipped sc, (skip next unworked sc, dc in the back loop only of the next sc, dc in the back loop only of the skipped sc) 4 times; turn (5 cross sts)

Second half of Row 2: Dc in each of the 10 unworked loops of the sc on row 1; ch 1, turn. (10 dc) (This half of the row is worked behind the first half.)

Row 3: Matching the stitches of the first and second halves of row 2, sc through both thicknesses across; ch 2, turn. (10 sc)

First half of Row 4: Dc in the back loop only of each of the next 10 sc; turn (10 dc)

Second half of Row 4: (Skip unworked loop of the next sc, dc in the unworked loop of the next sc, dc in the unworked loop of the skipped sc) 5 times; ch 1, turn. (5 cross sts)

Row 5: Matching the stitches of the first and second halves of row 2, sc through both thicknesses across; ch 2, turn. (10 sc)

Rows 6-9: Repeat rows 2-5; do not turn at the end of row 9.

Edging: Sc evenly around the scrubbie.

Next round: Sl st in every sc around; join with a sl st in the first sl st. Fasten off. Weave in ends.

Dishcloth (Finished size: about 8" x 8")

Ch 33.

Row 1: Sc in the 2nd ch from hook and in each ch across; turn. (32 sc)

Row 2: Sl st in the first sc, ch 3 to count as the first dc, (skip next dc, dc in the next dc, dc in the skipped dc) 15 times, dc in the last dc, ch 1, turn. (15 X sts)

Row 3: Sc in each dc across, sc in the top of the ch 3; turn. (32 sc)

Rows 4-25 : (Repeat rows 2-3) 11 times. Fasten off after row 25. Weave in ends.

Hanging Towel (not pictured)

Ch 51.

Row 1: Sc in the 2nd ch from hook and in each ch across; turn. (50 sc)

Row 2: Sl st in the first sc, ch 3 to count as the first dc, (skip next dc, dc in the next dc, dc in the skipped dc) 24 times, dc in the last dc, ch 1, turn. (24 X sts)

Row 3: Sc in each dc across, sc in the top of the ch 3; turn. (50 sc)

Rows 4-41: (Repeat rows 2-3) 19 times.

Row 42: Ch 1, sc in each of the next 24 sc, sc dec over the next 2 sc, sc in each of the last 24 sc; ch 1, turn. (49 sc)

Row 43: Sc in the first st, (skip next st, sc in the next st)

across; ch 1, turn. (25 sc) Continue with the All-Crochet Towel & Topper pattern starting with row 50 and ending with row 79. Edge and finish as per towel instructions.

